

Cleaning & Maintenance

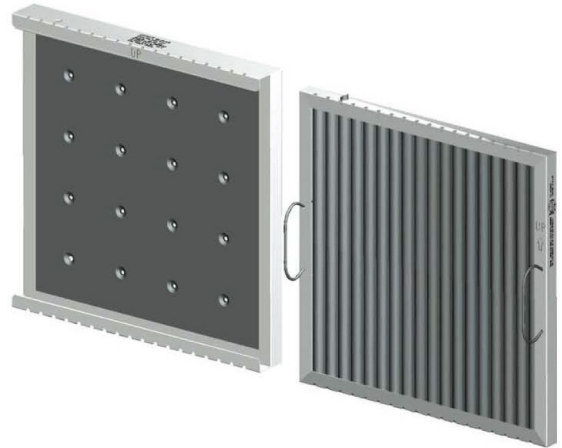
CAPTRATE® Brand Grease-Stop® Combo Filter



CAPTRATE®

General Product Information:

The Grease-Stop Combo Filter is a two-stage filter assembly used in commercial kitchen exhaust hoods. The unit consists of two sections: a primary stainless steel Baffle Component and a secondary Filter Component comprised of a bed of porous ceramic media. The components must be assembled for use, and separated for cleaning.



Filter Component

Baffle Component

General Maintenance Requirements:

Proper cleaning and maintenance is necessary for trouble-free operation and optimal performance.

Daily cleaning of the baffle-filter and bead-bed filter sections (separately) is recommended using one of the following methods:

1. Wash filter components separately using a commercial dishwasher (preferred method, if available.)
2. Wash filter components separately by soaking overnight in a sink (or commercial soak tank) with commercial detergent or degreaser.
3. Some applications depending upon cooking emissions and usage may require periodic overnight soak with commercial detergent or degreaser, in addition to daily cleaning with a commercial dishwasher.

- ❖ **Cooking emissions vary depending on volume, type food product, and cooking process.**
- ❖ **Refer to Application Guide Chart for additional Information.**
- ❖ **See Special Application Recommendations.**